

# TEXAS TIMBER PRICE TRENDS

## Pine Sawlog Prices Continued to Fall

Sawlog markets were squeezed by weak housing markets, depressed lumber markets, mill closure and curtailment, and high fuel costs. Pine sawlog prices continued to fall during March/April 2008.

Statewide pine sawlog price averaged \$29.12/ton. This was 20.0% off the last period and 36.1% off a year ago. In Northeast Texas, average pine sawlog price increased to \$36.53/ton, a \$2.54/ton or 7.5% increase compared to the last period. It was still 19.8% lower than the same period a year ago. Average pine sawlog price in Southeast Texas was \$26.61/ton. It was 34.5% lower than the last period and 40.7% lower than a year ago.

A reporter commented, "Hope we survive with \$4.25/gal fuel cost and mills & trucks shutting down."

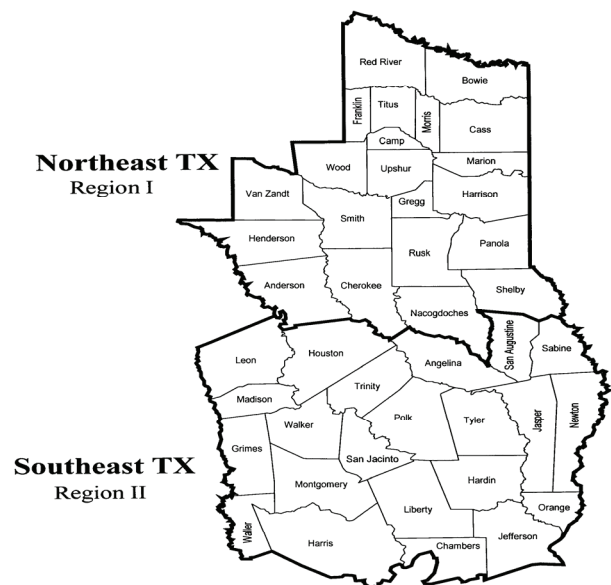
Pine pulpwood prices averaged \$10.42/ton during the March/April period. This was a 25.7% decrease from the last period and 11.5% decrease from a year ago. The difference in pine pulpwood prices between Northeast and Southeast Texas was small (\$0.67/ton).

Small diameter pine sawlog (CNS) market was also affected by weak housing market. Statewide average CNS price was \$14.90/ton. Although 3.3% higher than the last period, the CNS price was still 30.4% lower than a year ago.

Hardwood products prices, sawlog and pulpwood remained relatively strong. Statewide hardwood sawlog price was \$19.32/ton, 7.0% off the last period while 9.6% higher year over year. A reporter noted, "Hardwood products have held their value better than pine."

Hardwood pulpwood prices averaged \$9.47/ton statewide, 16.7% lower than the last period while still 8.1% higher than a year ago. The prices in two regions are roughly at the same level, \$9.75/ton in Northeast and \$9.31/ton in Southeast Texas.

**Texas Timber Price Trends  
Market Regions**

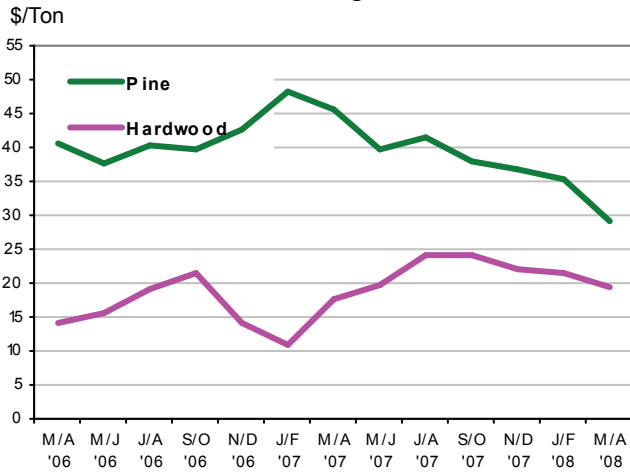


## Stumpage Prices in Texas

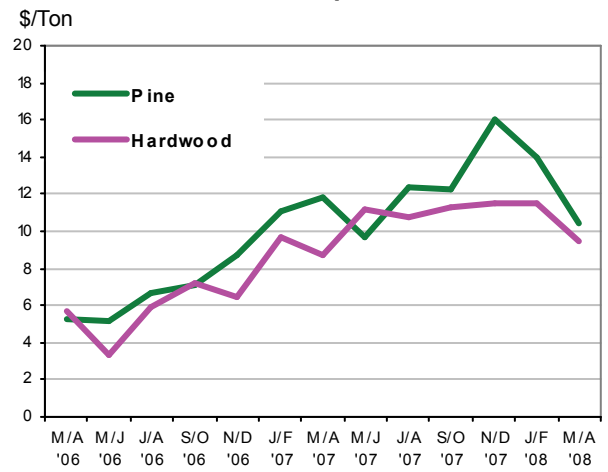
Product /Region	Average Price		Last Period			Year Ago			Report	
<b>PINE</b>										
<b>Sawlogs</b>	<b>\$/ton</b>	<b>\$/MBF</b>	<b>\$/ton</b>	<b>\$/MBF</b>	<b>Chg</b>	<b>\$/ton</b>	<b>\$/MBF</b>	<b>Chg</b>	<b>#</b>	<b>tons</b>
Northeast TX	36.53	276.88	33.99	283.54	7.5% ↑	45.57	321.34	-19.8% ↓	66	89,869
Southeast TX	26.61	211.37	40.65	269.12	-34.5% ↓	44.85	323.28	-40.7% ↓	62	265,425
Statewide	29.12	228.53	36.39	277.54	-20.0% ↓	45.55	321.4	-36.1% ↓	128	355,294
USFS	24.19	193.5	**	**	**	**	**	**	4	12,913
<b>Pulpwood</b>	<b>\$/ton</b>	<b>\$/cord</b>	<b>\$/ton</b>	<b>\$/cord</b>	<b>Chg</b>	<b>\$/ton</b>	<b>\$/cord</b>	<b>Chg</b>	<b>#</b>	<b>tons</b>
Northeast TX	10.85	29.17	15.00	40.32	-27.7% ↓	12.3	33.11	-11.8% ↓	60	175,529
Southeast TX	10.18	27.48	10.93	29.52	-6.9% ↓	8.08	21.8	26.0% ↑	44	308,837
Statewide	10.42	28.1	14.03	37.75	-25.7% ↓	11.77	31.7	-11.5% ↓	104	484,367
USFS	9.08	24.52	**	**	**	**	**	**	3	5,215
<b>Chip-N-Saw</b>	<b>\$/ton</b>	<b>\$/cord</b>	<b>\$/ton</b>	<b>\$/cord</b>	<b>Chg</b>	<b>\$/ton</b>	<b>\$/cord</b>	<b>Chg</b>	<b>#</b>	<b>tons</b>
Northeast TX	15.76	42.55	20.61	55.64	-23.5% ↓	21.42	57.83	-26.4% ↓	8	2,823
Southeast TX	14.88	40.18	**	**	**	**	**	**	18	124,161
Statewide	14.90	40.23	14.43	38.96	3.3% ↑	21.42	57.83	-30.4% ↓	26	126,983
<b>HARDWOOD</b>										
<b>Mixed Sawlogs</b>	<b>\$/ton</b>	<b>\$/MBF</b>	<b>\$/ton</b>	<b>\$/MBF</b>	<b>Chg</b>	<b>\$/ton</b>	<b>\$/MBF</b>	<b>Chg</b>	<b>#</b>	<b>tons</b>
Northeast TX	17.03	154.33	20.27	182.87	-16.0% ↓	17.81	169.59	-4.4% ↓	25	6,056
Southeast TX	27.83	241.04	24.79	216.95	12.3% ↑	**	**	**	10	1,629
Statewide	19.32	173.36	20.77	186.69	-7.0% ↓	17.62	167.57	9.6% ↑	35	7,685
USFS	**	**	**	**	**	**	**	**	**	**
<b>Pulpwood</b>	<b>\$/ton</b>	<b>\$/cord</b>	<b>\$/ton</b>	<b>\$/cord</b>	<b>Chg</b>	<b>\$/ton</b>	<b>\$/cord</b>	<b>Chg</b>	<b>#</b>	<b>tons</b>
Northeast TX	9.75	27.35	11.79	34.09	-17.3% ↓	8.76	24.49	11.3% ↑	22	17,291
Southeast TX	9.31	26.1	7.42	20.79	25.5% ↑	**	**	**	15	28,807
Statewide	9.47	26.57	11.37	32.78	-16.7% ↓	8.76	24.49	8.1% ↑	37	46,098
USFS	2.01	5.64	**	**	**	**	**	**	3	539

1. Stumpage price statistics include gatewood sales. Stumpage prices for gatewood sales are estimated by subtracting cut-and-haul costs, other expenses, and profits provided by reporter.
2. Price is calculated from a specific conversion factor reported for each sale if available; otherwise, the average conversion factors listed on page 4 are used. MBF = Thousand Board Feet. The DOYLE LOG SCALE is used for board foot measurements.
3. Statewide data excludes U.S. Forest Service sales.
4. - indicates insufficient sales to report price statistics (less than three sales).
5. Prices listed for previous periods may differ from previously published values because additional data have been received.
6. Price change in percentage is calculated based on price in ton.
7. Extreme outliers from reported data are detected and filtered out based on statistical methods.
8. Price changes are calculated based on price in ton.

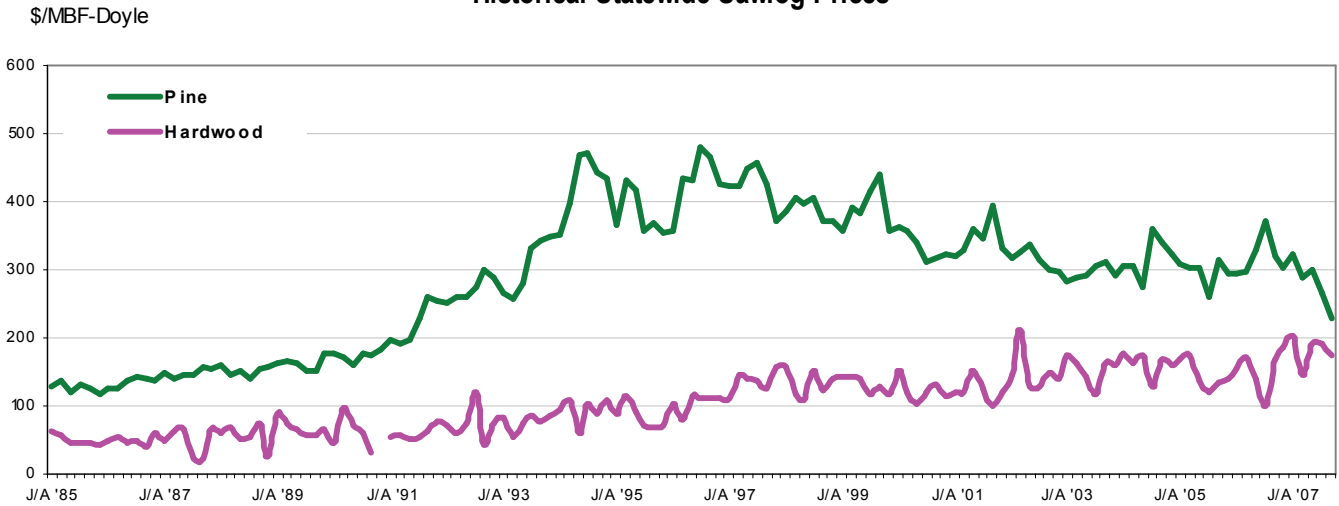
Sawlogs



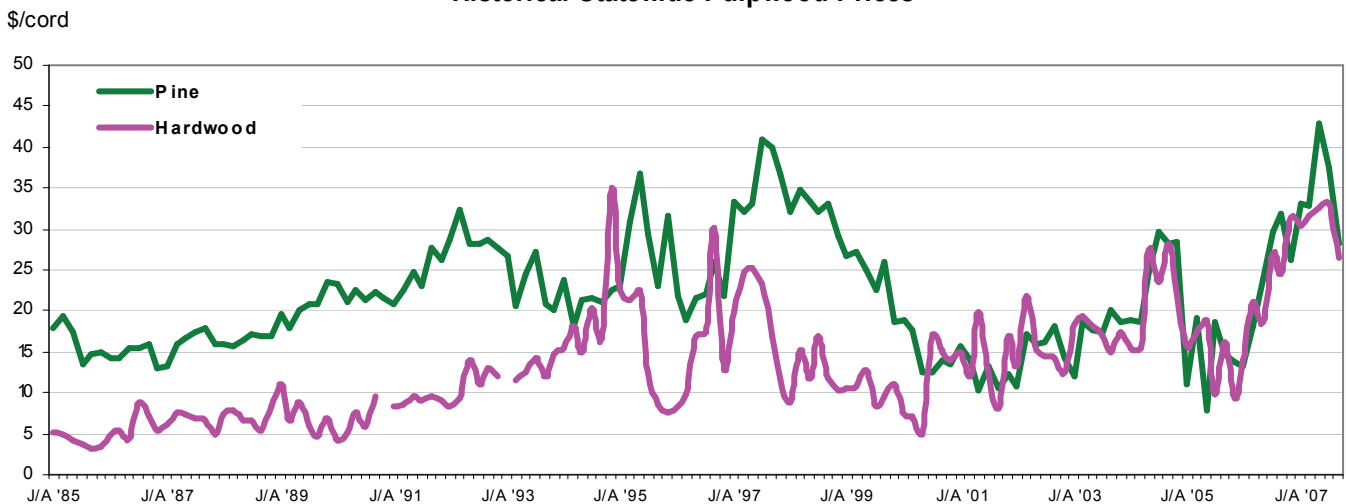
Pulpwood



Historical Statewide Sawlog Prices



Historical Statewide Pulpwood Prices



Note: A gap in the chart means less than 3 sales were reported and no price statistics were compiled.  
 For chart data, please go to <http://texasforests.tamu.edu/timberpricetrends>.



*Texas Timber Price Trends* is a bi-monthly publication reporting average prices paid for standing timber in Texas.

***This report is intended only as a guide to general price levels.*** Individuals inter-

ested in buying and selling timber can use this report to monitor market trends and get a general idea of what timber is worth. However, it should not be used to judge the fair market value of a specific timber sale, which may vary considerably due to many factors.

#### **HOW ARE AVERAGE PRICES CALCULATED?**

Data published in this report are from actual timber sales as reported by as many as 60 cooperators active in the East Texas timber market. Reporters include forest product companies, logging contractors, consulting foresters, family forest landowners, financial institutions, and federal agencies.

The prices are volume weighted average prices. The price per ton for each product category is as reported or using a specific conversion factor provided by the reporters. When a specific conversion factor for each sale is not available, an average conversion factor listed here is used instead.

#### **VOLUME CONVERSION FACTORS**

##### **Sawlogs & Chip-N-Saw**

Pine— 8 tons=1 MBF-Doyle

Pine CNS— 2.7 tons= 1 Cord

Hardwood— 9 tons= 1 MBF-Doyle

##### **Pulpwood**

Pine— 2.7 tons=1 Cord

Hardwood— 2.8 tons= 1 Cord

**This publication is also available on the Texas Forest Service website at:**

<http://texasforestservicetamu.edu/timberpricetrends>

#### **WANT TO BE A REPORTER?**

If you are active in the East Texas timber market, please consider becoming a cooperating price reporter. You will receive report forms bi-monthly with a self-return envelope. In addition, you will receive a hard copy of the report in exchange for your price information.

**Texas Forest Service**  
**301 Tarrow, Suite 364**  
**College Station, TX 77840-7896**

**T E X A S**  
**FOREST SERVICE**  
The Texas A&M University System