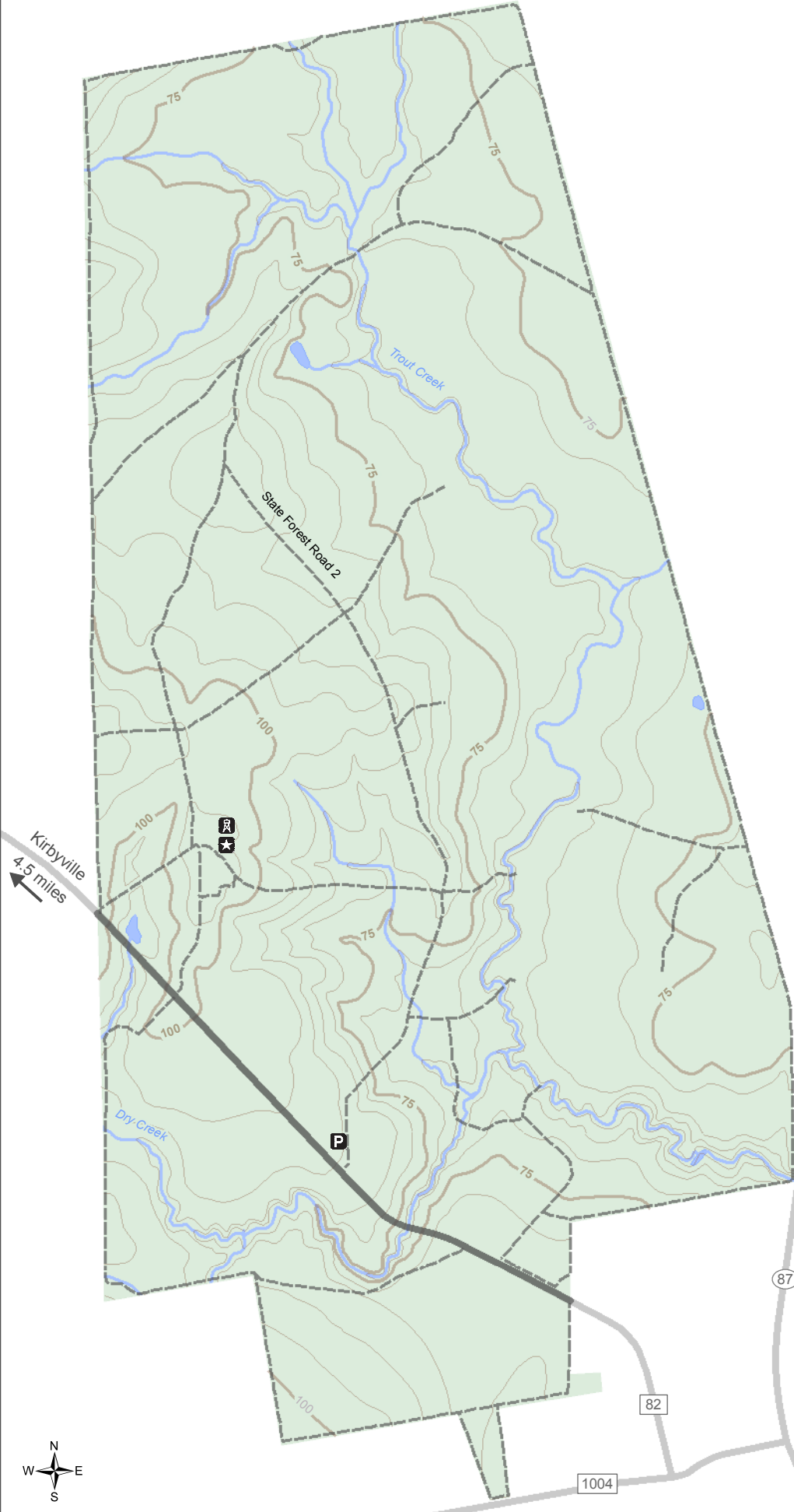


E. O. Siecke State Forest

- State Forest
- Pond
- Stream
- Paved road
- State Forest road
- ★ Kirbyville District Office
8:00 - 5:00 p.m.
Monday - Friday
FM 82, 4.5 miles east of Kirbyville
(409) 423-2890
- P Parking
- ⚠ Fire lookout tower



Kirbyville
4.5 miles

