

# Texas Longleaf Conservation Assistance Program

## Overview

The Texas Longleaf Conservation Assistance Program provides both financial and technical assistance to eligible landowners for the establishment and management of Longleaf Pine.

Historically, Longleaf Pine covered much of the Southeast including Southeast Texas. However, as the country began moving west, many of those acres were lost. Today, many groups are working together to restore Longleaf Pine to its historical range while also managing existing areas of Longleaf Pine.

The Texas Longleaf Implementation Team, a multi organization group including federal, state, private and NGO partners, through funds provided by the National Fish and Wildlife Foundation, is working with landowners to increase and manage Longleaf acres in Texas.



## Benefits

Eligible program participants can receive financial and technical assistance to establish or enhance Longleaf Pine through implementing conservation practices such as prescribed burning, site preparation, reforestation, and forest stand improvement. Payments are made to participants after conservation practices and activities identified in an approved forest management plan are implemented.

## Eligibility

Landowners with property located within 9 East Texas Counties (see map) are eligible to apply. Eligible land includes pastureland, forestland, and other farm and ranch lands. Approved participants may receive up to 50% payment not to exceed a standard cap rate for implementing approved conservation practices.

### *Applicants must:*

- Control or own eligible land
- Already possess or develop a written forest management plan
- Comply with all Texas Forestry Best Management Practices
- Agree to all program restrictions and requirements

# TEXAS LONGLEAF IMPLEMENTATION TEAM

## Allowable Program Rates\*

Prescribed Burning - \$30/ac

Site Preparation/Tree Planting - \$450/ac

Forest Stand Improvement - \$275/ac

*\* approved participants will receive 50% payment of total cost up to the maximum amounts listed above*

## Longleaf Pine Quick Facts

**Where to Plant:** well drained sandy and sandy loam sites within the approved SGA

**Seedling Options:** containerized seedlings

**When to Plant:** November—February provided adequate soil moisture

### **Site Preparations:**

- Prescribed Burning
- Shearing
- Raking
- Piling
- Bedding
- Ripping
- Herbicides

For More Information

(979) 458-6650

<http://tfsweb.tamu.edu/longleaf>

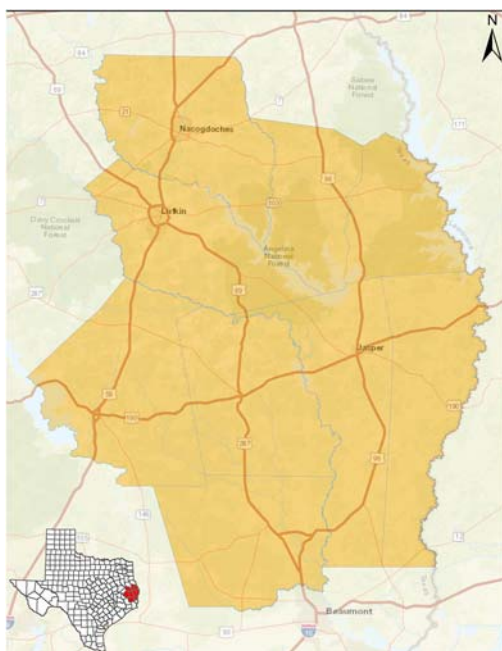
## **How to Apply**

Interested landowners must complete an application form which can be provided by calling (979) 458-6650 or by visiting <http://tfsweb.tamu.edu/longleaf>.

Members from the Texas Longleaf Implementation Team can assist eligible landowners with developing a forest management plan and schedule of activities. This will become the basis of the Texas Longleaf Conservation Assistance Program contract.

All applications will be ranked based on a number of factors including, but not limited, to: site suitability, tract size, ability to complete prescribed practices, ecosystem diversity, and Longleaf connectivity.

*Figure 1: Significant Geographic Area*



Priority Counties Include:

Angelina	Hardin
Jasper	Nacogdoches
Newton	Polk
San Augustine	Sabine
Tyler	

## **Additional Information**

- Continuous sign-up, applications can be submitted at anytime
- Landowner must own property within the SGA boundary
- Approved conservation practices must be completed within one year of funding approval
- Participants must provide invoice of implemented practice for reimbursement
- For more information visit <http://tfsweb.tamu.edu/longleaf>