

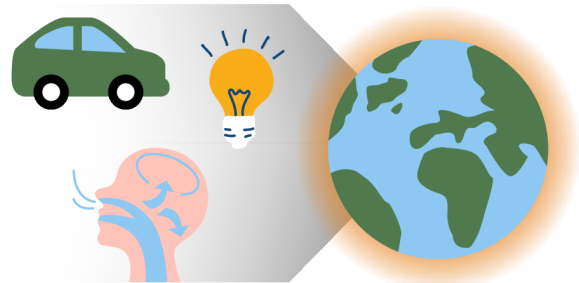
# FOREST FAST BREAK

## Carbon Capture

### Did you know?

Carbon dioxide (CO<sub>2</sub>) is created by everyday human activity, like driving cars, using electricity, and even breathing!

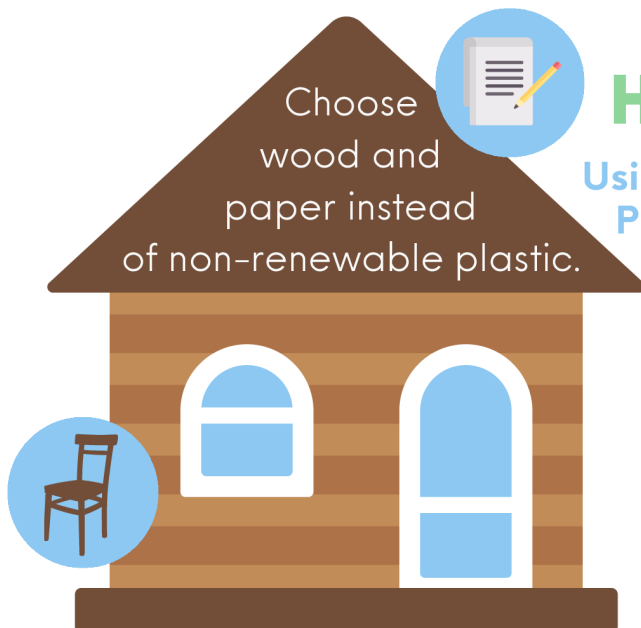
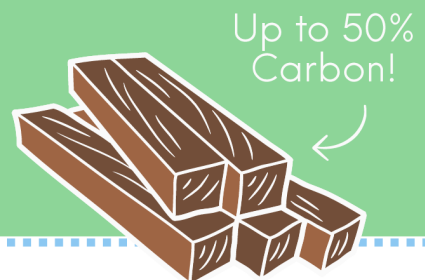
CO<sub>2</sub> in Earth's atmosphere helps trap heat and keep our planet warm.



But TOO MUCH CARBON can lead to global climate change.

### Tree Solutions

During **photosynthesis**, trees absorb CO<sub>2</sub> from the atmosphere and store it in their wood.



Choose wood and paper instead of non-renewable plastic.

### How can humans help?

#### Using Forest Products

**Afforestation:**  
Planting New Forests



**Reforestation:**  
Replanting Harvested Forests



Name: \_\_\_\_\_

# Quiz



## FOREST FAST BREAK

### Carbon Capture

1

What happens when carbon dioxide is released into the atmosphere?

---

---

---

---

2

Lots of things release carbon dioxide.  
Can you name **THREE**?

1

---

2

---

3

---

3

**True or False**

Carbon sequestration is the process of carbon dioxide being stored in trees. \_\_\_\_\_



## FOREST FAST BREAK

### Carbon Capture

4

Match the term to the definition with an arrow.

**Reforestation**

Planting trees in a new place  
to create a forest

**Afforestation**

Replanting trees in a forest  
that has been harvested

5

**True or False**

Carbon stays in wood products, like chairs, houses, and  
skateboards, even after a tree is harvested. \_\_\_\_\_

6

**Bonus Question**

Think about the products around you. What are 5 items in  
the room that are made from trees?

---

---

---

---

---