

## Texas Resilient Forests Incentive Program (TReFIP)

### Supporting Healthy, Productive, and Resilient East Texas Forests

**Project Goal:** Provide financial compensation to small-acreage landowners in East Texas who are willing to implement adaptive, *beyond-business-as-usual* silvicultural practices. These practices, guided by the best available science, aim to improve forest resiliency, support sustainable forestry, and enhance the wide range of ecosystem services provided by healthy forest landscapes.

**Program Objectives:** TReFIP is designed to support forest landowners in applying adaptive, silvicultural practices that enhance both economic and ecological outcomes. TReFIP program objectives include:

- **Maintain Stand Vigor** – Keep forests healthy and productive for as long as possible before additional tending is needed.
- **Enhance Product Value** – Minimize low-value outputs while promoting the growth of higher-value forest products.
- **Reduce Carbon Costs** – Apply silvicultural activities in ways that minimize greenhouse gas emissions.
- **Integrate Practices** – Combine complementary treatments to achieve multiple benefits.
- **Protect Soils** – Minimize soil disturbance to sustain long-term site productivity.
- **Encourage Native Groundcovers** – Promote desirable native understory vegetation to improve/maintain forest soil health and enhance wildlife habitat.
- **Reduce Risks** – Manage forests to minimize the risk of catastrophic losses from pests, diseases, or natural disturbances.
- **Sustain Working Forests** – Ensure forests remain productive, resilient, and economically viable for future generations.

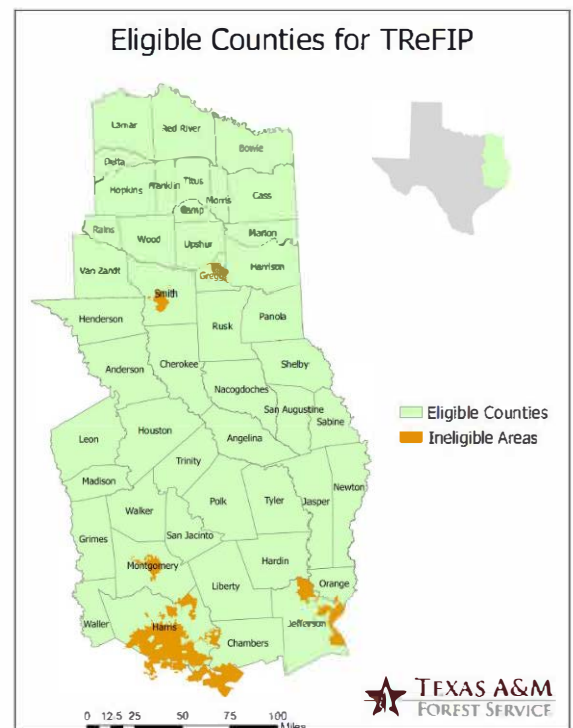
**Who Can Participate?** Eligible applicants are private, non-industrial forest landowners whose property is located within designated eligible counties, excluding areas identified as high-population centers (see map). Each legal property owner shall be limited to one active contract at any given time, without regard to the number of ownership interests, co-owners, or jointly held properties.

#### Funding Rules:

- Funding is limited to **\$30,000 per individual** or a **100-acre maximum treatment area** per individual, per open contract.
- Cost-share assistance is based on a payment schedule, with rates typically covering about 80% of the average cost for approved practices.
- Payment dispersed after the work is finished and approved.

#### Requirements:

- Landowners must **maintain program benefits for at least 5 years** following completion.
- **Duplicate funding** for the same practice on the same acre through other cost-share programs is prohibited.



**Available December 2025**



- Work with an approved Project Manager to plan, apply, and verify project completion.

**Application Process:**

Work with an approved TReFIP Project Manager — either a Texas A&M Forest Service (TAMFS) District Forester or a trained Northeast Texas Conservation Delivery Network (NETX CDN) professional — to plan, apply, and verify project completion.

**Step 1:** Contact your local TX A&M District Forester to schedule a site visit. Find your local District Forester at: <https://tfsweb.tamu.edu/directory>

**Step 2:** During the site visit, complete the TReFIP Data Collection Form, with your District Forester.

**Step 3:** Follow up with your District Forester to confirm your application has been successfully submitted. You'll receive a PDF copy of your submitted application by email.

Applications may be submitted at any time, but they are reviewed and awarded twice yearly — in January and July. Applicants will be notified of their status within four weeks of each review period.

**Approved Practices:** There are five suites of forest management practices. Applicants may apply for any combination of practices under a single suite. The suites of practices include:

**Suite #1: Forest Stand Establishment for Fiber Production**

Site specific, adaptive silvicultural treatments that ensure newly planted forest trees grow and thrive beyond the establishment phase, with a primary goal of high-value fiber production.

**Suite #2: Forest Stand Improvement**

Adaptive silvicultural practices that enhance forest composition and structure to increase tree vigor, growth, diversity, and wildlife habitat.

**Suite #3: Forest Edge Enhancement**

Practices that improve transitional zones between forests and adjacent habitats—such as roads, rights-of-way, and fields—by promoting native grasses and forbs beneficial to wildlife and pollinators.

**Suite #4: Edge of Field & Agroforestry**

The intentional integration of trees into agricultural and livestock systems to improve productivity, soil health, environmental services, and economic resilience

**Suite #5: Forest Stand Establishment for Restoration & Diversity**

Treatments to establish forests where the primary goal is ecological restoration—improving habitat diversity and ecosystem stability rather than fiber production.

Working through their Project Manager, landowners may apply for a single practice or combine multiple practices within a suite of practices, if all activities meet TReFIP goals and objectives. The maximum payment under TReFIP is \$30,000 per contract or is limited to treatments on a maximum of 100 acres—whichever limit is reached first.

*Texas A&M Forest Service provides equal opportunities in its programs and employment to all persons, regardless of race, color, sex, religion, national origin, disability, age, genetic information, veteran status, sexual orientation, or gender identity.*

## Suite of Practices #1: Forest Stand Establishment for Fiber Production

CODE	PRACTICE NAME	PRACTICE PARAMETERS	TReFIP RATE	UNIT
101	Pine Seedling: CMP - Containerized	Required: Productive / suitable sites; Top genetic families; Controlled Mass Pollinated (CMP) seedlings; Containerized seedlings; Appropriate site preparation. Preferred: Fall planting if soil moisture is available; Wide between row planting spacing such as 7'X12'= 520 tpa or 7'X15'=415 tpa. Restricted: Open pollinated families; Winter planting; Planting after February 15 <sup>th</sup> not allowed without prior approval; Higher planting density.	\$0.28	seedling
102	Pine Seedling: CMP - Bare Root	Required: Productive / suitable sites; Top genetic families; Controlled Mass Pollinated (CMP) seedlings; Bare Root seedlings; Appropriate site preparation. Preferred: Winter planting; Wide between row planting spacing such as 7'X12'= 520 tpa or 7'X15'=415 tpa. Restricted: Open pollinated families; Higher planting density; Planting after February 15 <sup>th</sup> not allowed without prior approval.	\$0.22	seedling
103	Hardwood Seedlings: Containerized	Required: Highly productive sites; Species selection suitable for the site: Containerized seedlings; Planting layout is a dual cropping system – e.g., a 7' X 7' = 889 tpa layout in which half is sawtimber crop trees; Appropriate site preparation. Preferred: Fall planting if soil moisture is available. Restricted: Planting after February 15 <sup>th</sup> not allowed without prior approval.	\$0.22	seedling
104	Hardwood Seedlings: Bare Root	Required: Species selection suitable for the site: Bare root seedlings; Planting layout is a dual cropping system – e.g., a 7' X 7' = 889 tpa in which half is sawtimber crop trees; Appropriate site preparation. Restricted: Planting after February 15 <sup>th</sup> not allowed without prior approval.	\$0.13	seedling
105	Mechanical Site Preparation: Subsoiling (Ripping)	Considered for old fields, agricultural sites, hardpan sites, and/or select soil types. Not allowed on cutover sites without prior approval. Perform subsoiling at least 2–3 months before planting to allow soil to settle provided rainfall has occurred.	\$96.00	acre
106	Mechanical Site Preparation: Shear Only	May be considered on sites with excessive residual tree cover, large stumps, or dense hardwood brush left after harvest or high wind event. Otherwise shearing should be conducted at the time of planting. Excessive, deep shearing must be avoided to minimize soil disturbance.	\$112.00	acre
107	Mechanical Site Preparation: Disking (Harrowing)	Considered for old fields, agricultural sites, and/or specific soil types with limited wood debris and in which soil compaction would significantly limit growth.	\$44.00	acre
108	Site Preparation: Prescribed Burn	The use of a Certified and Insured Prescribed Burn Manager (CIPBM) is required. A Burn Plan should be prepared and/or approved by a CIPBM or a qualified natural resource professional. Follow-all prescribed burning laws and regulations. Limit intensity of the fire to prevent soil health degradation.	\$36.00	acre
109	Chemical Site Preparation: Herbicide	Cost-share assistance covers both the herbicide product and the application costs. A site-specific herbicide prescription must be developed and/or approved by a qualified natural resource professional (e.g., forester, certified herbicide specialist). The prescription must carefully address: 1) labeled application rates (not to exceed legal or recommended limits), 2) cost-effectiveness of the treatment, and 3) the best tank mix for the target vegetation, soil type, and season of application. All applications must	\$104.00	acre

		be made under appropriate weather and growing conditions. It is strongly recommended that all herbicide applications be carried out by a licensed pesticide applicator to ensure safety, compliance, and effectiveness.		
110	Site Preparation: Fertilization	Cost-share assistance covers both the fertilizer product and the application costs. Only sites with soils that are demonstrated to be responsive to fertilization (based on soil type, history, or prior research) will be eligible. Otherwise, landowners may submit a soil or foliar nutrient test to help identify limiting macro- and micro-nutrients and guide an appropriate prescription. Fertilization prescriptions must be developed and/or approved by a qualified natural resource professional, ensuring that: 1) application rates are within recommended guidelines. 2) nutrient formulations are appropriate for the site conditions, 3) timing of application aligns with site preparation objectives and planned planting.	\$80.00	acre
111	Planting: Wildland Machine	Rate covers only the cost of wildland machine planting. Eligible only on sites where: 1) topography, soil, and debris levels allow safe and effective use of planting machinery; and 2) the site has been adequately prepared (e.g., site prep burning, disking, or shearing if needed) to ensure access and quality planting. Landowners are responsible for ensuring proper survival checks are completed post-planting. Planting after February 15 is not allowed without prior approval.	\$0.15	seedling
112	Planting: Wildland Machine and Shear	Wildland planting while shearing debris. Eligible only on sites where: 1) residual logging debris, small stumps, or heavy brush would otherwise prevent successful machine planting, and 2) topography and soils allow safe and effective operation of V-blade planting equipment. Landowners are responsible for ensuring proper survival checks are completed post-planting. Planting after February 15 is not allowed without prior approval.	\$0.18	seedling
113	Planting: Openland Machine	Rate covers only the cost of openland machine planting. Eligible only on sites where: 1) topography, soil, and debris levels allow safe and effective use of planting machinery; and 2) the site has been adequately prepared (e.g., site prep burning, disking, or shearing if needed) to ensure access and quality planting. Landowners are responsible for ensuring proper survival checks are completed post-planting. Planting after February 15 is not allowed without prior approval.	\$0.13	seedling
114	Planting: Hand Planting Cutover	Rate covers only the cost of hand planting cutover site with either containerized or bare root seedlings. Eligible on sites where 1) terrain, soils, or residual debris make machine planting impractical or unsafe; 2) tract size or accessibility favors hand crews over machine operations. Landowners are responsible for ensuring proper handling and storage of seedlings prior to and during planting (cold storage, protection from drying). Hand planting must follow accepted silvicultural planting standards, including: 1) correct planting depth and straight root placement; 2) adequate soil closure around roots to prevent air pockets, 3) uniform spacing consistent with the approved prescription; 4) appropriate weather conditions during planting. Planting after February 15 is not allowed without prior approval.	\$0.10	seedling
115	Planting: Hand Planting Openland	Rate covers only the cost of hand planting openland (e.g., pasture or agricultural) site with either containerized or bare root seedlings. Landowners are responsible for ensuring proper handling and storage of seedlings prior to and during planting (cold storage, protection from drying). Hand planting must follow accepted silvicultural planting standards, including: 1) correct planting depth and straight	\$0.09	seedling

		root placement; 2) adequate soil closure around roots to prevent air pockets, 3) uniform spacing consistent with the approved prescription; 4) appropriate weather conditions during planting. Planting after February 15 is not allowed without prior approval.		
116	Chemical Release: Herbaceous Weed Control	Cost-share assistance covers both the herbicide product and the application costs. A site-specific herbicide prescription must be developed and/or approved by a qualified natural resource professional (e.g., forester, certified herbicide specialist). The prescription must carefully address: 1) labeled application rates (no exceeding of legal or recommended limits), 2) cost-effectiveness of the treatment, and 3) the best tank mix for the target vegetation, soil type, and season of application. All applications must be made under appropriate weather and growing conditions. It is strongly recommended that all herbicide applications be carried out by a licensed pesticide applicator to ensure safety, compliance, and effectiveness.	\$44.00	acre

## Suite #2: Forest Stand Improvement

CODE	PRACTICE NAME	PRACTICE PARAMETERS	TReFIP RATE	UNIT
201	Prescribed Burn	The use of a Certified and Insured Prescribed Burn Manager (CIPBM) is required. A Burn Plan should be prepared and/or approved by a CIPBM or a qualified natural resource professional. Follow-all prescribed burning laws and regulations. Burning must be conducted in a manner that promotes the restoration and maintenance of desired native groundcover, including both cool-season and warm-season species.	\$48.00	acre
202	Fertilization	Cost-share assistance covers both the fertilizer product and the application costs. Only sites with soils that are demonstrated to be responsive to fertilization (based on soil type, history, or prior research) will be eligible. Otherwise, landowners may submit a soil or foliar nutrient test to help identify limiting macro- and micro-nutrients and guide an appropriate prescription. Fertilization is limited to suitable sites that have adequately controlled competing vegetation, basal area under 100 ft <sup>2</sup> /acre, (unless otherwise pre-approved), and a planned harvest no sooner than six years after application. Fertilization prescriptions must be developed and/or approved by a qualified natural resource professional, ensuring that: 1) application rates are within recommended guidelines. 2) nutrient formulations are appropriate for the site conditions, 3) timing of application aligns crown closure and/or mid-rotation.	\$110.00	acre
203	Mechanical Competition Control	Suitable on sites where excessive understory brush, woody debris, or ladder fuels make it unsafe or impractical to implement a prescribed burn or herbicide treatment. Includes mulching, shredding, or mowing of woody competition using specialized equipment (e.g., drum choppers, forestry mulchers). Landowners must have a planned followup treatment (e.g., herbicide release, prescribed fire, or re-entry with mechanical equipment) to address resprouting and new competition. Treatments must be conducted in a way that minimizes damage to residual or desired crop trees and regeneration. Cost-share applies only to competition control, not debris disposal or site clearing for non-forestry purposes. Treatments must not result in excessive soil disturbance, erosion, or water quality impairment.	\$325.00	acre

		Mechanical treatments should be timed and executed to avoid nesting seasons of sensitive wildlife when feasible.		
204	Chemical Competition Control	Cost-share assistance covers both the herbicide product and the application costs. A site-specific herbicide prescription must be developed and/or approved by a qualified natural resource professional (e.g., forester, certified herbicide specialist). The prescription must carefully address: 1) labeled application rates (no exceeding of legal or recommended limits), 2) cost-effectiveness of the treatment; 3) the best tank mix for the target vegetation, soil type, and season of application; and 4) Consideration to promoting native grasses, with preference given to prescriptions that minimize damage to desired species. Applications must occur only under suitable weather and growing conditions to maximize effectiveness and minimize off-target impacts. The use of a licensed and insured pesticide applicator is strongly recommended to ensure safety, compliance, and effectiveness.	\$108.00	acre
205	Forest Thinning 60	<p>Thinning operations must improve spacing, crown development, and tree vigor and must include daylighting of forest roads and major trails. Post-harvest residual basal area must be <math>\leq 60</math> ft<sup>2</sup> per acre (dominant and codominant trees only). High-grading, diameter-limit cuts, and real estate-driven harvests are prohibited. All thinning must follow Texas Forestry Best Management Practices (BMPs); compliance documentation may be required. Supervision by a certified forester and use of a Texas Pro Logger—certified contractor is strongly recommended. Landowners must provide a stumpage and/or product summary report.</p> <p>Daylighting is required and involves the removal of woody vegetation within a 15–30 ft buffer on each side of designated forest roads or major trails. Retained basal area within the buffer must not exceed 30 ft<sup>2</sup> per acre. Prioritize removing trees that hinder road drying, increase maintenance, or reduce visibility. Retain evenly distributed, well-formed trees for habitat, aesthetics, and erosion control—provided they do not impair road function. Daylighting should be paired with native grass establishment within the buffer to improve road drying, safety, and longevity. Cost-share funds may not be used for clearing related to subdivision development or utility right-of-way expansion. Follow-up practices such as prescribed fire, herbicide release, native grass establishment, or road maintenance are encouraged to maintain long-term effectiveness.</p>	\$275.00	acre
206	Forest Thinning 70	<p>Thinning operations must improve spacing, crown development, and tree vigor and must include daylighting of forest roads and major trails. Post-harvest residual basal area must be <math>&gt; 60</math> ft<sup>2</sup> per acre and <math>\leq 70</math> ft<sup>2</sup> per acre (dominant and codominant trees only). High-grading, diameter-limit cuts, and real estate-driven harvests are prohibited. All thinning must follow Texas Forestry Best Management Practices (BMPs); compliance documentation may be required. Supervision by a certified forester and use of a Texas Pro Logger—certified contractor is strongly recommended. Landowners must provide a stumpage and/or product summary report.</p> <p>Daylighting is required and involves the removal of woody vegetation within a 15–30 ft buffer on each side of designated forest roads or major trails. Retained basal area within the buffer must not exceed 30</p>	\$240.00	acre

		ft <sup>2</sup> per acre. Prioritize removing trees that hinder road drying, increase maintenance, or reduce visibility. Retain evenly distributed, well-formed trees for habitat, aesthetics, and erosion control—provided they do not impair road function. Daylighting should be paired with native grass establishment within the buffer to improve road drying, safety, and longevity. Cost-share funds may not be used for clearing related to subdivision development or utility right-of-way expansion. Follow-up practices such as prescribed fire, herbicide release, native grass establishment, or road maintenance are encouraged to maintain long-term effectiveness.		
207	Forest Thinning 80	<p>Thinning operations must improve spacing, crown development, and tree vigor and must include daylighting of forest roads and major trails. Post-harvest residual basal area must be &gt; 70 ft<sup>2</sup> per acre and ≤ 80 ft<sup>2</sup> per acre (dominant and codominant trees only). High-grading, diameter-limit cuts, and real estate-driven harvests are prohibited. All thinning must follow Texas Forestry Best Management Practices (BMPs); compliance documentation may be required. Supervision by a certified forester and use of a Texas Pro Logger—certified contractor is strongly recommended. Landowners must provide a stumpage and/or product summary report.</p> <p>Daylighting is required and involves the removal of woody vegetation within a 15–30 ft buffer on each side of designated forest roads or major trails. Retained basal area within the buffer must not exceed 30 ft<sup>2</sup> per acre. Prioritize removing trees that hinder road drying, increase maintenance, or reduce visibility. Retain evenly distributed, well-formed trees for habitat, aesthetics, and erosion control—provided they do not impair road function. Daylighting should be paired with native grass establishment within the buffer to improve road drying, safety, and longevity. Cost-share funds may not be used for clearing related to subdivision development or utility right-of-way expansion. Follow-up practices such as prescribed fire, herbicide release, native grass establishment, or road maintenance are encouraged to maintain long-term effectiveness.</p>	\$210.00	acre
208	Purchase of Seed	Purchase of seed must contain native grasses, and be sourced from Texas, and pre-approved by project manager before purchase. Rates may range from 8–12 pounds/acre (bulk) ≈ 5–9 Pure Live Seed (PLS) pounds/acre. Utilize Texas Native Seeds Program Seed Mix Map: <a href="https://www.ckwri.tamuk.edu/research-programs/texas-native-seeds-program-tns/native-seed-selection-tool">https://www.ckwri.tamuk.edu/research-programs/texas-native-seeds-program-tns/native-seed-selection-tool</a> .	\$180.00	acre
209	Broadcast Seeds	Timing of application is late fall – early spring for cool moist germination window for many warm-season natives in East Texas; some warm-season seedings target late winter to spring depending on species and moisture. Check species planting window. Site must be prepared so that seed can contact bare mineral soil. Plan for at least 1–2 seasons of follow-up (weed control mowing or spot herbicide for invasive annuals) to allow natives to become established.	\$65.00	acre

**Suite #3: Forest Edge Enhancement**

CODE	PRACTICE NAME	PRACTICE PARAMETERS	TReFIP RATE	UNIT
301	Tree Density Management: Daylighting	Remove all trees and woody vegetation, leaving no more than 30 ft <sup>2</sup> of basal area per acre, within a 15 – 30 foot buffer on each side of designated forest roads and/or major trails. Focus on removing shading trees that limit road drying, increase maintenance costs, or reduce visibility and safety. Retain scattered, well-formed trees where appropriate for wildlife habitat, aesthetics, and erosion control, provided they do not compromise road functionality. Site should also be prepared so that seed can contact bare mineral soil if broadcasting native grass seeds. Daylighting is intended to improve road drying, safety, and longevity — not to convert corridors into non-forestry land uses. Cost-share is not available for clearing related solely to subdivision development or utility ROW expansion. Integration with follow-up practices such as seeding native grasses or road surface maintenance is encouraged.	\$110.00	acre
302	Brush Management & Competition Control	Eligible activities include 1) mechanical removal of undesirable woody brush and small trees within designated forest edge zones; 2) targeted herbicide application for control of invasive or aggressive native woody vegetation, vines, and competing understory; and 3) Integrated control treatments (mechanical + chemical) where appropriate. Landowner may need to prescribed follow-up treatments to ensure adequate control of resprouting species. The Treatment Zone: is to be up to 50 feet from the forest edge or other designated enhancement zone. Integration with follow-up practices such as seeding native grasses or road surface maintenance is encouraged.	\$85.00	acre
303	Purchase of Seed	Purchase of seed must contain native grasses, and be sourced from Texas, and pre-approved by project manager before purchase. Rates may range from 8–12 pounds/acre (bulk) ≈ 5–9 Pure Live Seed (PLS) pounds/acre. Utilize Texas Native Seeds Program Seed Mix Map: <a href="https://www.ckwri.tamuk.edu/research-programs/texas-native-seeds-program-tns/native-seed-selection-tool">https://www.ckwri.tamuk.edu/research-programs/texas-native-seeds-program-tns/native-seed-selection-tool</a> .	\$180.00	acre
304	Broadcast Seeds	Timing of application is late fall – early spring for cool moist germination window for many warm-season natives in East Texas; some warm-season seedings target late winter to spring depending on species and moisture. Check species planting window. Site must be prepared so that seeds can contact bare mineral soil. Plan for at least 1–2 seasons of follow-up (weed control mowing or spot herbicide for invasive annuals) to allow natives to become established.	\$65.00	acre

### Suite #4: Edge of Field & Agroforestry

CODE	PRACTICE NAME	PRACTICE PARAMETERS	TReFIP RATE	UNIT
401	Mechanical Site Preparation: Subsoiling (Ripping)	Allowed only if evidence of hardpan within 22" of the soil surface. A tractor-drawn subsoiler, ripper, or winged subsoiler implement if preferred. Conduct operations when soil moisture is low enough to allow effective shattering of compacted layers. Avoid excessively wet soil conditions to prevent smearing and re-compaction. Perform subsoiling at least 2–3 months before planting to allow soil to settle provided rainfall has occurred.	\$96.00	acre
402	Chemical Site Preparation: Herbicide	Allowed only if evidence of difficult to control weed species. Otherwise use Chemical Release: Band Spray. Cost-share assistance covers both the herbicide product and the application costs. A site-specific herbicide prescription must be developed and/or approved by a qualified natural resource professional (e.g., forester, certified herbicide specialist). The prescription must carefully address: 1) labeled application rates (not to exceed legal or recommended limits), 2) cost-effectiveness of the treatment, and 3) the best tank mix for the target vegetation, soil type, and season of application. All applications must be made under appropriate weather and growing conditions. It is strongly recommended that all herbicide applications be carried out by a licensed pesticide applicator to ensure safety, compliance, and effectiveness.	\$80.00	acre
403	Mechanical Site Preparation: Disking (Harrowing)	Considered for old fields, agricultural sites, and/or specific soil types with limited wood debris and in which soil compaction would significantly limit growth.	\$44.00	acre
404	Pine seedlings: OP Bare Root	Required: Open pollinated (OP) bare root seedlings are preferred; Appropriate site preparation. Planting density is not to exceed 435 seedlings per planted acre without prior approval. Planting after February 15 <sup>th</sup> not allowed without prior approval.	\$0.05	seedling
405	Planting: Openland Machine	Rate covers only the cost of openland machine planting. Eligible only on sites where: 1) topography, soil, and debris levels allow safe and effective use of planting machinery; and 2) the site has been adequately prepared (e.g., site prep burning, disking, or shearing if needed) to ensure access and quality planting. Landowners are responsible for ensuring proper survival checks are completed post-planting. Planting after February 15 is not allowed without prior approval.	\$0.12	seedling
406	Planting: Hand planting Openland	Rate covers only the cost of hand-planting openland (e.g., pasture or agricultural) sites with either containerized or bare root seedlings. Landowners are responsible for ensuring proper handling and storage of seedlings prior to and during planting. Hand planting must follow accepted silvicultural planting standards, including: 1) correct planting depth and straight root placement; 2) adequate soil closure around roots to prevent air pockets, 3) uniform spacing consistent with the approved prescription; 4) appropriate weather conditions during planting. Planting after February 15 is not allowed without prior approval.	\$0.08	seedling

407	Site Preparation: Fertilization	Cost-share assistance covers both the fertilizer product and the application costs. Only sites with soils that are demonstrated to be responsive to fertilization (based on soil type, history, or prior research) will be eligible. Otherwise, landowners may submit a soil or foliar nutrient test to help identify limiting macro- and micro-nutrients and guide an appropriate prescription. Fertilization prescriptions must be developed and/or approved by a qualified natural resource professional, ensuring that: 1) application rates are within recommended guidelines. 2) nutrient formulations are appropriate for the site conditions, 3) timing of application aligns with site preparation objectives and planned planting.	\$80.00	acre
408	Chemical Release: Band Spray	Cost-share assistance covers both the herbicide product and the band spray application costs. A site-specific herbicide prescription must be developed and/or approved by a qualified natural resource professional (e.g., forester, certified herbicide specialist). The prescription must carefully address: 1) labeled application rates, 2) cost-effectiveness of the treatment; and 3) the best tank mix for the target vegetation, soil type, and season of application. Applications must occur only under suitable weather and growing conditions to maximize effectiveness and minimize off-target impacts. The use of a licensed and insured pesticide applicator is strongly recommended.	\$44.00	acre

#### Suite #5: Forest Stand Establishment for Restoration/Diversity

CODE	PRACTICE NAME	PRACTICE PARAMETERS	TReFIP RATE	UNIT
501	Pine Seedling: Bare Root	Required: Suitable sites; Appropriate site preparation; Bare root seedlings; Species selection suitable for the site. Restricted: Planting after February 15 <sup>th</sup> not allowed without prior approval.	\$0.05	seedling
502	Hardwood Seedlings: Bare Root	Required: Suitable sites; Appropriate site preparation; Bare root seedlings; Species selection suitable for the site. Restricted: Planting after February 15 <sup>th</sup> not allowed without prior approval.	\$0.13	seedling
503	Mechanical Site Preparation: Subsoiling (Ripping)	Considered for old fields, agricultural sites, hardpan sites, and/or select soil types. Not allowed on cutover sites without prior approval. Perform subsoiling at least 2–3 months before planting to allow soil to settle provided rainfall has occurred.	\$96.00	acre
504	Mechanical Site Preparation: Shear Only	May be considered on sites on sites with excessive residual tree cover, large stumps, or dense hardwood brush left after harvest or high wind event. Otherwise shearing should be conducted at the time of planting. Excessive, deep shearing must be avoided to minimize soil disturbance.	\$112.00	acre
505	Mechanical Site Preparation: Disking (Harrowing)	Considered for old fields, agricultural sites, and/or specific soil types with limited wood debris and in which soil compaction would significantly limit growth.	\$44.00	acre
506	Site Preparation: Prescribed Burn	The use of a Certified and Insured Prescribed Burn Manager (CIPBM) is required. A Burn Plan should be prepared and/or approved by a CIPBM or a qualified natural resource professional. Follow-all prescribed burning laws and regulations. Limit intensity of the fire to prevent soil health degradation.	\$36.00	acre

507	Chemical Site Preparation: Herbicide	Cost-share assistance covers both the herbicide product and the application costs. A site-specific herbicide prescription must be developed and/or approved by a qualified natural resource professional (e.g., forester, certified herbicide specialist). The prescription must carefully address: 1) labeled application rates (no exceeding of legal or recommended limits), 2) cost-effectiveness of the treatment, and 3) the best tank mix for the target vegetation, soil type, and season of application. All applications must be made under appropriate weather and growing conditions. It is strongly recommended that all herbicide applications be carried out by a licensed pesticide applicator to ensure safety, compliance, and effectiveness.	\$104.00	acre
508	Planting: Wildland Machine	Rate covers only the cost of wildland machine planting. Eligible only on sites where: 1) topography, soil, and debris levels allow safe and effective use of planting machinery; and 2) the site has been adequately prepared (e.g., site prep burning, disking, or shearing if needed) to ensure access and quality planting. Landowners are responsible for ensuring proper survival checks are completed post-planting. Planting after February 15 is not allowed without prior approval.	\$0.15	seedling
509	Planting: Wildland Machine and Shear	Wildland planting while shearing debris in a single pass. Eligible only on sites where: 1) residual logging debris, small stumps, or heavy brush would otherwise prevent successful machine planting, and 2) topography and soils allow safe and effective operation of V-blade planting equipment. Landowners are responsible for ensuring proper survival checks are completed post-planting. Planting after February 15 is not allowed without prior approval.	\$0.18	seedling
510	Planting: Openland Machine	Rate covers only the cost of openland machine planting. Eligible only on sites where: 1) topography, soil, and debris levels allow safe and effective use of planting machinery; and 2) the site has been adequately prepared (e.g., site prep burning, disking, or shearing if needed) to ensure access and quality planting. Landowners are responsible for ensuring proper survival checks are completed post-planting. Planting after February 15 is not allowed without prior approval.	\$0.13	seedling
511	Planting: Hand Planting Cutover	Rate covers only the cost of hand planting cutover site with either containerized or bare root seedlings. Eligible on sites where 1) terrain, soils, or residual debris make machine planting impractical or unsafe; and/or 2) tract size or accessibility favors hand crews over machine operations. Landowners are responsible for ensuring proper handling and storage of seedlings prior to and during planting (cold storage, protection from drying). Hand planting must follow accepted silvicultural planting standards, including: 1) correct planting depth and straight root placement; 2) adequate soil closure around roots to prevent air pockets, 3) uniform spacing consistent with the approved prescription; 4) appropriate weather conditions during planting. Planting after February 15 is not allowed without prior approval.	\$0.10	seedling
512	Planting: Hand Planting Openland	Rate covers only the cost of hand planting openland (e.g., pasture or agricultural) site with either containerized or bare root seedlings. Landowners are responsible for ensuring proper handling and storage of seedlings prior to and during planting (cold storage, protection from drying). Hand planting must follow accepted silvicultural planting standards, including: 1) correct planting depth and straight root placement; 2) adequate soil closure around roots to prevent air pockets, 3) uniform spacing	\$0.09	seedling

		consistent with the approved prescription; 4) appropriate weather conditions during planting. Planting after February 15 is not allowed without prior approval.		
513	Chemical Release: Herbaceous Weeds	Cost-share assistance covers both the herbicide product and the application costs. A site-specific herbicide prescription must be developed and/or approved by a qualified natural resource professional (e.g., forester, certified herbicide specialist). The prescription must carefully address: 1) labeled application rates (no exceeding of legal or recommended limits), 2) cost-effectiveness of the treatment, and 3) the best tank mix for the target vegetation, soil type, and season of application. All applications must be made under appropriate weather and growing conditions. It is strongly recommended that all herbicide applications be carried out by a licensed pesticide applicator to ensure safety, compliance, and effectiveness.	\$44.00	acre

Project Managers may apply for a single practice or combine multiple practices within a single suite of practices, if all activities meet TReFIP goals and objectives. The maximum payment under TReFIP is \$30,000 per contract or is limited to treatments on a maximum of 100 acres—whichever limit is reached first.

*Texas A&M Forest Service provides equal opportunities in its programs and employment to all persons, regardless of race, color, sex, religion, national origin, disability, age, genetic information, veteran status, sexual orientation, or gender identity.*